

Jellyfish

Piano

Composed by Danny Green
October 28, 2007

Samba

A

DMAJ⁹ C#7^{#9} F#m⁹ B7^{#9} Em⁹ A13^{b9}

DMAJ⁹ Gm⁹ A⁺⁷

F#m⁹ B7^{#9} Em⁹ F^o F#m¹¹

F#m¹¹ B7^{#9} Em⁹ F^o F#m¹¹

F#m¹¹ B7^{#9} EbMAJ⁹ Db7^{#9}

B

F#m⁹ EbMAJ⁹

F#m⁹ EbMAJ⁹ Abm^{7b5} G13 || EbMAJ⁹ Abm^{7b5} Db⁹

Jellyfish - Piano p.2

DMAJ⁹ C#7#9 F#m⁹ B7#9

Em⁹ A13b9 DMAJ⁹ A7

Piano Solo

C

DMAJ⁹ Gm⁹ A7

F#m⁹ B7#9 Em⁹ F^o

F#m⁹ B7#9 Em⁹ F^o

F#m⁹ B7#9 EbMAJ⁹ 1. A7 2. Db7#9

Bass Solo

D

F#m⁹ EbMAJ⁹

F#m⁹ EbMAJ⁹ Abm^{7b5} Db7#9

Jellyfish - Piano p.3

E DMAJ⁹ E^bMAJ⁹ A⁷

F[#]m⁹ B7[#]9 E^bMAJ⁹ A⁷

DMAJ⁹ E^bMAJ⁹ A⁷

F[#]m⁹ B7[#]9 E^bMAJ⁹ A⁷9

F F[#]m⁹ B⁷ E^m7^b5

A⁷ F[#]m⁹ B⁷

E^m9 A⁷ D₉⁶

FMAJ¹³ DMAJ⁹ N.C.

DMAJ⁹ C[#]7[#]9 F[#]m⁹ B7[#]9 E^m9 A¹³9

Jellyfish - Piano p.4

G DMAJ⁹ Gm⁹ A⁺⁷

F#m⁹ B7#⁹ Em⁹ F^o F#m¹¹

F#m¹¹ B7#⁹ Em⁹ F^o F#m¹¹

F#m¹¹ B7#⁹ E♭MAJ⁹ D♭7#⁹

H F#m⁹ E♭MAJ⁹

F#m⁹ E♭MAJ⁹ A♭m7^{b5} G¹³ E♭MAJ⁹ A♭m7^{b5} D♭⁹

I DMAJ⁹ C#7#⁹ F#m⁹ B7#⁹ Em⁹ A^{13b9}

Jellyfish

Bass

Composed by Danny Green

October 28, 2007

Samba

A DMAJ⁹ C[#]7[#]9 F[#]m⁹ B7[#]9 Em⁹

DMAJ⁹ Gm⁹ A⁺7

F[#]m⁹ B7[#]9 Em⁹ F^o F[#]m¹¹

F[#]m¹¹ B7[#]9 Em⁹ F^o F[#]m¹¹

F[#]m¹¹ B7[#]9 EbMAJ⁹ Db7[#]9

B

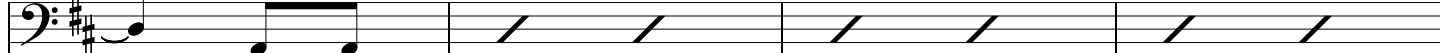
1. 2.

Copyright 2007 Danny Green

www.dannygreen.net

Jellyfish - Bass p.2

DMAJ⁹ C#7#⁹ F#m⁹ B7#⁹



Em⁹

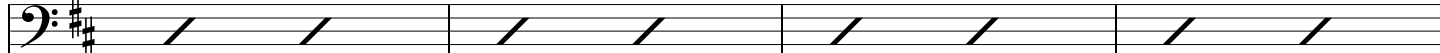


C Piano Solo

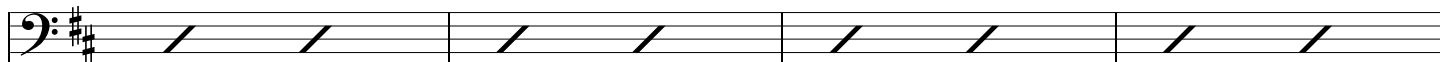
DMAJ⁹ Gm⁹ A⁷



F#m⁹ B7#⁹ Em⁹ F^o



F#m⁹ B7#⁹ Em⁹ F^o



F#m⁹ B7#⁹ EbMAJ⁹ 1. A⁷ 2. Db7#⁹

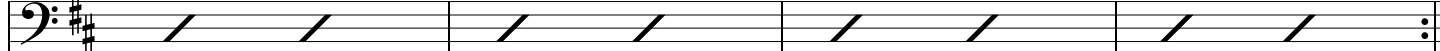


D Bass Solo

F#m⁹ EbMAJ⁹



F#m⁹ EbMAJ⁹ Abm7^{b5} Db7#⁹



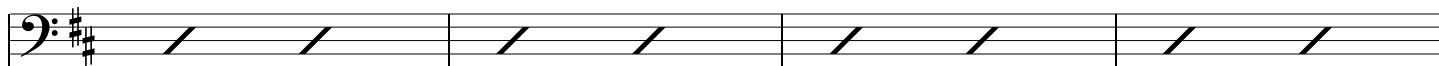
Jellyfish - Bass p.3

E

DMAJ⁹

E^bMAJ⁹

A⁷

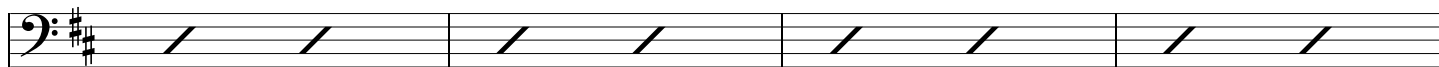


F#m⁹

B7^{#9}

E^bMAJ⁹

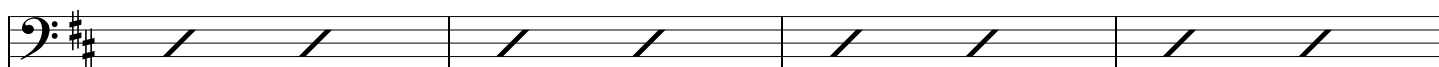
A⁷



DMAJ⁹

E^bMAJ⁹

A⁷

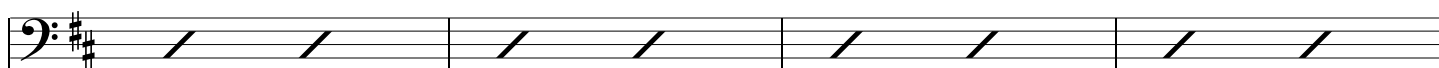


F#m⁹

B7^{#9}

E^bMAJ⁹

A^{7b9}



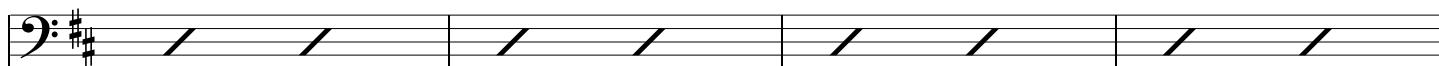
F

F#m⁹

B⁷

E^m7^{b5}

A⁷

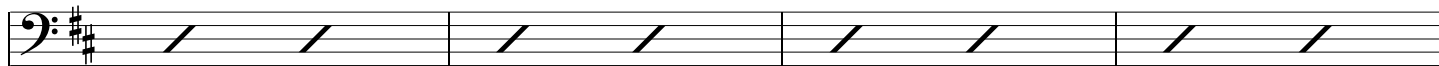


F#m⁹

B⁷

E^m⁹

A⁷



D₉⁶

FMAJ¹³

DMAJ⁹



DMAJ⁹

C#7^{#9}

F#m⁹

B7^{#9}

E^m⁹



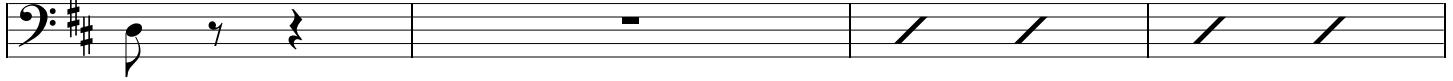
Jellyfish - Bass p.4

G

DMAJ⁹

Gm⁹

A⁺⁷



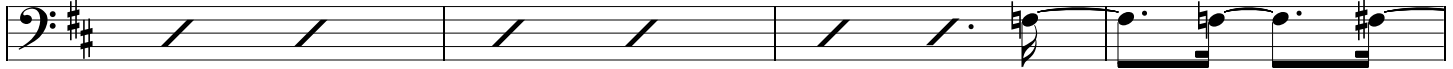
F#m⁹

B7#⁹

Em⁹

F^o

F#m¹¹



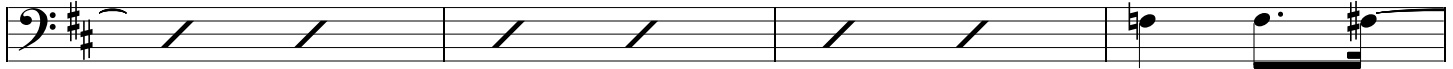
F#m¹¹

B7#⁹

Em⁹

F^o

F#m¹¹



F#m¹¹

B7#⁹

E♭MAJ⁹

D♭7#⁹



H



I

DMAJ⁹

C#7#⁹

F#m⁹

B7#⁹

Em⁹



Jellyfish

Flute

Composed by Danny Green

October 28, 2007

Samba

A

The musical score for 'Jellyfish' is written for flute in a Samba style. It is in 2/4 time and the key of D major (two sharps). The piece is divided into two main sections, A and B. Section A consists of the first nine staves of music. Section B is an 8-measure repeat, indicated by a double bar line with a repeat sign and the number '8' above it. The score includes various rhythmic patterns, slurs, and accents, typical of Samba music. The first staff begins with a treble clef, a key signature of two sharps, and a 2/4 time signature. The music features a mix of eighth and sixteenth notes, often beamed together, and includes some grace notes and slurs. The piece concludes with a final double bar line.

Jellyfish - Flute p.2

Piano Solo

C

DMAJ⁹ Gm⁹ A⁷
F#m⁹ B7#⁹ Em⁹ F^o
F#m⁹ B7#⁹ Em⁹ F^o
F#m⁹ B7#⁹ EbMAJ⁹ 1. A⁷ 2. Db7#⁹

Bass Solo

D

F#m⁹ EbMAJ⁹
F#m⁹ EbMAJ⁹ Abm7b⁵ Db7#⁹

E

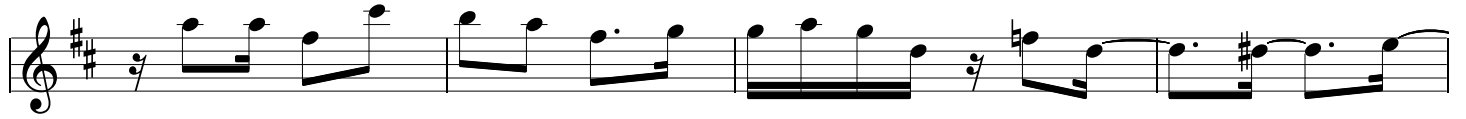
(tacet)

(enter)

Jellyfish - Flute p.3

The image displays a musical score for a flute, page 3, titled "Jellyfish". The score is written in treble clef with a key signature of two sharps (F# and C#). It is divided into three main sections: F, G, and H. Section F (measures 1-12) features a complex melodic line with many sixteenth and thirty-second notes, including slurs and accents. Section G (measures 13-24) continues with intricate passages, including a triplet of eighth notes in measure 13 and a sequence of sixteenth notes in measure 14. Section H (measures 25-28) begins with a melodic phrase and concludes with a fermata over a whole note, with the number "8" written below the staff. The score uses various musical notations such as slurs, accents, and dynamic markings like *mf* and *ff*.

Jellyfish - Flute p.4



I

