

Guitar

# Second Chance

Composed by Danny Green

June 23 / July 17 2014

**A**

**B**

26 *Jazz Waltz (piano sets up tempo)*

Bass & Drums Enter

30 Cmaj7 Dø7/C

**C**

34 Cmaj9 C+ C6 C7(b9sus4) F Fm6 C/E Eb°

42 G7/D Bbm6/Db A+7 Dm9 Fm9 G7(b9) Dø7 G7(b9)

**D**

48 Cmaj9 C+ C6 C7(b9sus4) F Fm6 C/E Eb°

56 G7/D Bbm6/Db A+7 Dm9 Fm9 Bb7(sus4)

**E**

64 Ebmaj7 Eb° Ebmaj7 B7 Emaj7 C7/E Emaj7 C7

72 F Eb9/F Dm Bbm6/Db F/C A7/C# Dm11 Bbm6 C7(b9sus4)

**F**

80 F(add2) Bbm<sup>6</sup> C7(#9) F(add2) Bbm<sup>6</sup>/F

*mf* *f* 4:3 4:3

**G**

88 *Solo Section* F F<sup>+</sup> F<sup>6</sup> F7(sus4) F7

*p.*

96 Bbmaj7 G7/B F/C A7/C# Dm Bbm<sup>6</sup>

**H**

104 F F<sup>+</sup> F<sup>6</sup> F7(sus4) F7

*mp*

112 Bbmaj7 G7/B F/C A7/C# Dm Bbm<sup>6</sup>

*mf*

**I**

120 F/C C7(b9sus4) **Open**

*f* 4:3 4:3

**On Cue**

128 F/C Dm<sup>9</sup> Bbm<sup>6</sup>/Db B7(sus4)

4:3 4:3 3

**J**

132 Ebmaj7 Eb<sup>o</sup> Ebmaj7 B7 Emaj7 C7/E Emaj7 C7

4:3 4:3 4:3 4:3

140 F Eb<sup>9</sup>/F Dm Bbm<sup>6</sup>/Db F/C A7/C# Dm<sup>11</sup> Bbm<sup>6</sup> C7(b9sus4)

4:3 4:3 *dim.* 4:3 *sp*

**K**

148 F(add2) Bbm6 C7(#9) F(add2) Bbm6/F

**L**

**Open - Piano Solo**

156 F(add2) C7(b9sus4)/F

160 F(add2) C7(b9sus4)/F

**M**

**On Cue - Piano Solo Continues**

164 F(add2) C7(b9sus4)/F F(add2) C7(b9sus4)/F

172 F(add2) C7(b9sus4)/F F C7(b9sus4)/F

**N**

180 Dm rit. Eb7/Bb

**O**

184 5

Violin 1

# Second Chance

Composed by Danny Green

June 23 / July 17 2014

**A**

**6** poco rit. A tempo

12

17 poco accel. rit.

21 A tempo rit.

*mp* *f* *mf* *ff* *p* *mf*

*cresc.*

**B**

26 *Jazz Waltz* (piano sets up tempo) Bass & Drums Enter

**4** **4**

**C**

34 **14**

**D**

48

*mp*

56

4:3 5

**E**

64

*mf* *f*

72

*ff* *dim.* *sp*

**F**

80

*f*

**G**

*Solo Section*

**H**

88

*mp* *mp*

112

*mf*

**I**

120

*f* **Open**

128 **On Cue**

*f* **3**

**J** 132  
*mf* *f*

140  
*ff* *dim.* *sp*

**K** 148  
*mf*

**L** **Open** - Piano Solo  
(1st x only) 6

**M** **On Cue** - Piano Solo Continues  
164 *f*

172 *f*

**N** 180 *rit.*

**O** 184 *a tempo* *p* *rit.*

Violin 2

# Second Chance

Composed by Danny Green

June 23 / July 17 2014

**A**

**6** poco rit. A tempo

12

17 poco accel. rit.

21 A tempo rit.

*mf* *cresc.* *ff* *p* *mf*

**B**

26 *Jazz Waltz* (piano sets up tempo) Bass & Drums Enter

4 4

**C**

34 14

**D**

48

*mp*

56

**E**

64 *mf* *f*

72 *ff* *dim.* *sp*

**F**

80 *f*

**G**

*Solo Section*

**H**

88 *mp* *mp* 14

112 *mf*

**I**

**Open**

120 *f*

128 **On Cue**

*f*



**J**  
132  
*mf* *f*

140  
*ff* *dim.* *sp*

**K**  
148  
*mf*

**L** **Open - Piano Solo**  
156  
(1st x only) **6**

**M** **On Cue - Piano Solo Continues**  
164  
*f*

172  
*f*

**N**  
180  
*rit.*

**O** *a tempo*  
184  
*p* *rit.*

Viola

# Second Chance

Composed by Danny Green

June 23 / July 17 2014

**A**

6 *poco rit.* **A tempo**

12

17 *poco accel.* **rit.**

*mf* *cresc.* *ff*

21 **A tempo** **rit.** //

*p* *mf*

**B**

26 *Jazz Waltz (piano sets up tempo)* **4** **Bass & Drums Enter** **4**

**C**

34 **14**

**D**

48 *mp*

56

**E**

64

Musical staff for section E, measures 64-71. The staff is in 12/8 time. It contains a sequence of eighth notes. The first measure starts with a mezzo-forte (*mf*) dynamic, and the second measure transitions to a forte (*f*) dynamic.

72

Musical staff for section E, measures 72-79. The staff is in 12/8 time. It contains a sequence of eighth notes. The first measure starts with a fortissimo (*ff*) dynamic, followed by a decrescendo (*dim.*) and then a piano (*sp*) dynamic. An accent (^) is placed over the eighth note in measure 75.

**F**

80

Musical staff for section F, measures 80-87. The staff is in 12/8 time. It contains a sequence of eighth notes. A dynamic marking of forte (*f*) is present. There are 4:3 ratio markings under the notes. A fermata is placed over the final two notes.

**G**

88

*Solo Section*

**H**

Musical staff for section G, measures 88-111. The staff is in 12/8 time. It contains a sequence of eighth notes. A dynamic marking of mezzo-piano (*mp*) is present. A 14-measure rest is indicated above the staff.

112

Musical staff for section G, measures 112-119. The staff is in 12/8 time. It contains a sequence of eighth notes. A dynamic marking of mezzo-forte (*mf*) is present.

**I**

120

**Open**

Musical staff for section I, measures 120-127. The staff is in 12/8 time. It contains a sequence of eighth notes. A dynamic marking of forte (*f*) is present. There are 4:3 ratio markings under the notes.

128 **On Cue**

Musical staff for section I, measures 128-135. The staff is in 12/8 time. It contains a sequence of eighth notes. There are 4:3 ratio markings under the notes.

**J**

132

Musical staff J, measures 132-139. The staff is in 12/8 time. It begins with a *mf* dynamic and a half note. The melody continues with quarter notes and half notes. A *f* dynamic marking appears at measure 135. The staff ends with a half note.

140

Musical staff J, measures 140-147. The staff is in 12/8 time. It begins with a *ff* dynamic and a half note. The melody continues with quarter notes and half notes. A *dim.* marking is present at measure 142. A hairpin symbol indicates a dynamic change. A *sp* marking appears at measure 145. The staff ends with a half note.

**K**

148

Musical staff K, measures 148-155. The staff is in 12/8 time. It begins with a half note. A fermata is placed over measures 149-150, with a '2' above it. The melody continues with quarter notes and half notes. *mf* dynamic marking is present at measure 151. Two *4:3* triplet markings are present at measures 152 and 153. The staff ends with a half note.

**L**

**Open** - Piano Solo

156

(1st x only)

Musical staff L, measures 156-157. The staff is in 12/8 time. It begins with a half note. A fermata is placed over measures 156-157, with a '6' above it. The staff ends with a double bar line.

**M**

**On Cue** - Piano Solo Continues

164

Musical staff M, measures 164-171. The staff is in 12/8 time. It begins with a half note. The melody continues with quarter notes and half notes. *f* dynamic marking is present at measure 165. Four *4:3* triplet markings are present at measures 166, 167, 170, and 171. The staff ends with a half note.

172

Musical staff M, measures 172-179. The staff is in 12/8 time. It begins with a half note. The melody continues with quarter notes and half notes. *f* dynamic marking is present at measure 172. Four *4:3* triplet markings are present at measures 173, 176, 177, and 178. The staff ends with a half note.

**N**

180

**rit.**

Musical staff N, measures 180-183. The staff is in 12/8 time. It begins with a half note. The melody continues with quarter notes and half notes. The staff ends with a double bar line and a 4/4 time signature.

**O**

184

*a tempo*

**rit.**

Musical staff O, measures 184-187. The staff is in 12/8 time. It begins with a half note. The melody continues with quarter notes and half notes. *p* dynamic marking is present at measure 184. The staff ends with a double bar line and a 4/4 time signature.

Cello

# Second Chance

Composed by Danny Green

June 23 / July 17 2014

**A**

6 **poco rit.** **A tempo**

12

17 **poco accel.** **rit.**

21 **A tempo** **rit.** //

*mp* *cresc.* *f* *mf* *ff* *p* *mf*

**B**

26 *Jazz Waltz* (*piano sets up tempo*) **Bass & Drums Enter**

4 4

**C**

34

14

**D**

48

56

**E**

64

72

**F**

80

**G**

88

*Solo Section*

**H**

112

**I**

120

128 **On Cue**

**J**

132

Musical notation for section J, measures 132-139. Bass clef, 4/4 time. Dynamics: *mf*, *f*.

140

Musical notation for section J, measures 140-147. Bass clef, 4/4 time. Dynamics: *ff*, *dim.*, *sp*.

**K**

148

Musical notation for section K, measures 148-155. Bass clef, 4/4 time. Includes a double bar line with '2' above it. Dynamics: *mf*.

**L**

**Open - Piano Solo**

156

(1st x only)

Musical notation for section L, measures 156-157. Bass clef, 4/4 time. Includes a double bar line with '6' above it.

**M**

**On Cue - Piano Solo Continues**

164

Musical notation for section M, measures 164-171. Bass clef, 4/4 time. Dynamics: *f*.

172

Musical notation for section M, measures 172-179. Bass clef, 4/4 time. Dynamics: *f*.

**N**

180

**rit.**

Musical notation for section N, measures 180-183. Bass clef, 4/4 time. Dynamics: *rit.*

**O**

184

*a tempo*

**rit.**

Musical notation for section O, measures 184-187. Bass clef, 4/4 time. Includes a double bar line with '2' above it. Dynamics: *rit.*

Piano

# Second Chance

Composed by Danny Green

June 23 / July 17 2014

**A**

5 **poco rit.** **A tempo**

9

13

17 **poco accel.** **rit.**

21 **A tempo** **rit.** //

Copyright © 2014 Danny Green  
Alante Recordings, ASCAP  
[www.dannygreen.net](http://www.dannygreen.net)



**B** *Jazz Waltz (piano sets up tempo)*

26 Cmaj7 D<sup>ø</sup>7/C

Bass & Drums Enter

30 Cmaj7 D<sup>ø</sup>7/C

**C**

34 Cmaj9 C<sup>+</sup> C<sup>6</sup> C7(b9sus4)

38 F Fm<sup>6</sup> C/E Eb<sup>o</sup>

42 G<sup>7</sup>/D Bbm<sup>6</sup>/Db A<sup>+7</sup> Dm<sup>9</sup> Fm<sup>9</sup> G<sup>7</sup>(b9) D<sup>ø</sup>7 G<sup>7</sup>(b9)

**D**

48 Cmaj9 C<sup>+</sup> C<sup>6</sup> C7(b9sus4)

52 F Fm<sup>6</sup> C/E Eb<sup>o</sup>

56 G<sup>7</sup>/D 4:3 B<sup>b</sup>m<sup>6</sup>/D<sup>b</sup> 4:3 A<sup>+</sup>7 Dm<sup>9</sup> 4:3

60 Fm<sup>9</sup> B<sup>b</sup>7(sus4) B<sup>b</sup>7(b9)

**E**

64 E<sup>b</sup>maj7 E<sup>b</sup>° E<sup>b</sup>maj7 4:3 B<sup>7</sup> 4:3

68 E<sup>m</sup>maj7 C<sup>7</sup>/E E<sup>m</sup>maj7 4:3 C<sup>7</sup> 4:3

72 F E<sup>b</sup>9/F Dm dim. B<sup>b</sup>m<sup>6</sup>/D<sup>b</sup> 4:3

76 F/C A<sup>7</sup>/C<sup>#</sup> Dm<sup>11</sup> B<sup>b</sup>m<sup>6</sup> C<sup>7</sup>(b9sus4) sp

**F**

80 F(add2) B<sup>b</sup>m<sup>6</sup> C<sup>7</sup>(#9) mf

84 F(add2) B<sup>b</sup>m<sup>6</sup>/F

**G**

*Solo Section*

88 F F+ F6 F7(sus4) F7

96 Bbmaj7 G7/B F/C A7/C# Dm Bbm6

**H**

104 F F+ F6 F7(sus4) F7

112 Bbmaj7 G7/B F/C A7/C# Dm Bbm6

**I**

(background line)

120 F/C C7(b9sus4)

**Open**

124 F/C C7(b9sus4)

**On Cue**

128 F/C Dm9 Bbm6/Db B7(sus4)

**J**

132 Ebmaj7 Eb° Ebmaj7 B7

136 Emaj7 C7/E Emaj7 C7

140 F Eb9/F Dm Bbm6/Db F/C A7/C# Dm11 Bbm6 C7(b9sus4)

**K**

148 F(add2) Bbm<sup>6</sup> C7(#9) F(add2) Bbm<sup>6</sup>/F

**L**

**Open - Piano Solo**

156 F(add2) C7(b9sus4)/F F(add2) C7(b9sus4)/F

**M**

**On Cue - Piano Solo Continues**

164 F(add2) C7(b9sus4)/F F(add2) C7(b9sus4)/F

172 F(add2) C7(b9sus4)/F F C7(b9sus4)/F

**N**

180 Dm rit. Eb<sup>7</sup>/Bb

**O**

184 *a tempo* p rit.

Bass

# Second Chance

Composed by Danny Green

June 23 / July 17 2014

**A**

16 9

**B**

26 *Jazz Waltz (piano sets up tempo)* Bass & Drums Enter  
 4 Cmaj7 Dø7/C

**C**

34 Cmaj9 C+ C6 C7(b9sus4) F Fm6 C/E Eb°

42 G7/D Bbm6/Db A+7 Dm9 Fm9 G7(b9) Dø7 G7(b9)

**D**

48 Cmaj9 C+ C6 C7(b9sus4) F Fm6 C/E Eb°

56 G7/D Bbm6/Db A+7 Dm9 Fm9 Bb7(sus4) Bb7(b9)

**E**

64 Ebmaj7 Eb° Ebmaj7 B7 Emaj7 C7/E Emaj7 C7

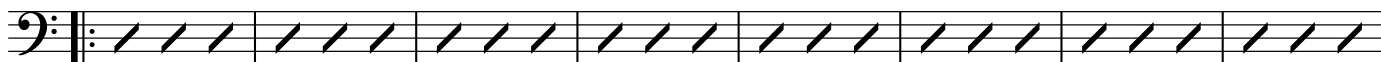
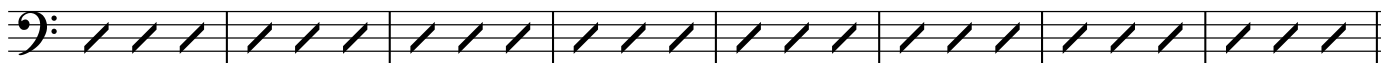
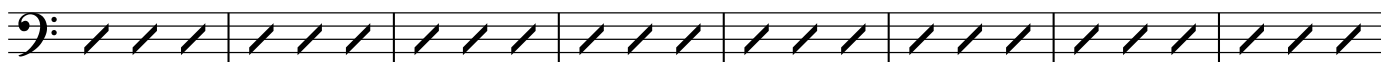
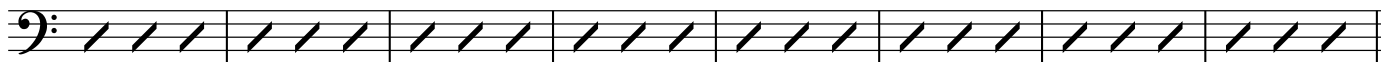
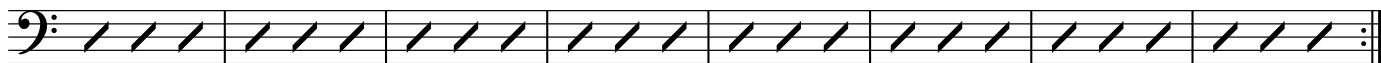
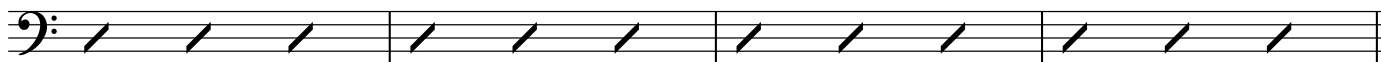
72 F Eb9/F Dm Bbm6/Db F/C A7/C# Dm11 Bbm6 C7(b9sus4)

*dim.* *sp*

**F**

80 F(add2) Bbm6 C7(#9) F(add2) Bbm6/F

*mf* 4:3 4:3

**G** *Solo Section*88 F F<sup>+</sup> F<sup>6</sup> F<sup>7(sus4)</sup> F<sup>7</sup>96 B<sup>b</sup>maj<sup>7</sup> G<sup>7</sup>/B F/C A<sup>7</sup>/C<sup>#</sup> Dm B<sup>b</sup>m<sup>6</sup>**H**104 F F<sup>+</sup> F<sup>6</sup> F<sup>7(sus4)</sup> F<sup>7</sup>112 B<sup>b</sup>maj<sup>7</sup> G<sup>7</sup>/B F/C A<sup>7</sup>/C<sup>#</sup> Dm B<sup>b</sup>m<sup>6</sup>**I**120 F/C C<sup>7(b9sus4)</sup> **Open** F/C C<sup>7(b9sus4)</sup>**On Cue**128 F/C Dm<sup>9</sup> B<sup>b</sup>m<sup>6</sup>/D<sup>b</sup> B<sup>7(sus4)</sup>**J** 132 E<sup>b</sup>maj<sup>7</sup> E<sup>b</sup>° E<sup>b</sup>maj<sup>7</sup> B<sup>7</sup> E<sup>b</sup>maj<sup>7</sup> C<sup>7</sup>/E E<sup>b</sup>maj<sup>7</sup> C<sup>7</sup>140 F E<sup>b</sup><sup>9</sup>/F Dm B<sup>b</sup>m<sup>6</sup>/D<sup>b</sup> F/C A<sup>7</sup>/C<sup>#</sup> Dm<sup>11</sup> B<sup>b</sup>m<sup>6</sup> C<sup>7(b9sus4)</sup>*dim.*

&lt;

*sp*

**K**

148 F(add2) Bbm<sup>6</sup> C7(#9) F(add2) Bbm<sup>6</sup>/F

*mf* 4:3 4:3

**L**

**Open - Piano Solo**

156 F(add2) C7(b9sus4)/F

160 F C7(b9sus4)/F

**M**

**On Cue - Piano Solo Continues**

164 F(add2) C7(b9sus4)/F F C7(b9sus4)/F

172 F(add2) C7(b9sus4)/F

176 F C7(b9sus4)/F

**N**

180 Dm **rit.** Eb<sup>7</sup>/Bb

**O**

184 *a tempo* **rit.**

arco