

Guitar
(Strings Rendition)

Porcupine Dreams

Composed by Danny Green
September 17, 2014

A *Intro*
Dm Bbm Dm Bbm

B *Head*
5 Dm Bbm Dm Gø7
9 Fm/Ab Bbm B° Fm/C A7/C#

C
13 Dm Bbm Dm Gø7
17 Dm Bbm Fm/C B°/C C7(b9sus4) A7/C#

D *Bass Solo*
21 Dm Bbm Dm Gø7
25 Fm/Ab Bbm B° Fm/C A7/C#
29 Dm Bbm Dm Gø7
33 F/C C#° Dm Bbm Fm/C B°/C C7(b9sus4) A7/C#

E *Open - Piano Solo*

37 Dm Bbm Dm G^{ø7}

41 Fm/Ab Bbm B^o Fm/C A⁷/C#

45 Dm Bbm Dm G^{ø7}

49 F/C C^{#o} Dm Bbm Fm/C B^o/C C⁷(b9sus4) A⁷/C#

F *On Cue - Head*

53 Dm Bbm Dm G^{ø7}

57 Fm/Ab Bbm B^o Fm/C A⁷/C#

G

61 Dm Bbm Dm G^{ø7}

65 Dm Bbm Fm/C B^o/C C⁷(b9sus4) A⁷/C#

4:3 4:3

H *Piano Sets up Fast Tempo*

69 **3**

sfz

73 **3**

sfz

I

77 N.C. Bbm Dm Gø7

81 Fm/Ab Bbm B° Fm/C A7/C#

J

85 Dm Bbm Dm Gø7

89 Dm Bbm Fm/C B°/C C7(b9sus4) A7/C#

K *Drum Solo*

93 **3**

sfz

97 **3x** **3**

sfz

Viola

Porcupine Dreams

Composed by Danny Green
September 17, 2014

A *Intro*

Musical notation for section A, Intro, measures 1-4. The key signature has one flat (Bb) and the time signature is 7/8. The notation consists of eighth and quarter notes with rests.

B *mf*
Head

Musical notation for section B, Head, measures 5-12. Measure 5 starts with a fermata over a half note. Measures 6-12 are a single whole note with a fermata. A '7' is written above the staff.

C
13

Musical notation for section C, measures 13-16. The notation consists of eighth and quarter notes with rests.

17

Musical notation for section C, measures 17-20. The notation consists of quarter and eighth notes.

D
21 *Bass Solo*

Musical notation for section D, Bass Solo, measures 21-28. Measures 21-28 are a single whole note with a fermata. A '7' is written above the staff.

E *p*
Open - Piano Solo
Tacit till cue

Musical notation for section E, Piano Solo, measures 37-40. The notation consists of half notes with fermatas.

41

Musical notation for section E, Piano Solo, measures 41-44. The notation consists of half notes with fermatas.

45

Musical notation for section E, Piano Solo, measures 45-48. The notation consists of eighth and quarter notes with rests.

49

Musical notation for section E, Piano Solo, measures 49-52. The notation consists of quarter and eighth notes.

F On Cue - Head

53

mp

57

f

G

61

mp

65

mf *f*

H

69 Piano Sets up Fast Tempo

2 3

I

77

4 *p* *f*

J

85

mp *mp*

89

mp *f*

K

Drum Solo

93

sfp < *sfp* < *sfp* <

97 **3x**

sfp < *sfp* < *sfp* <

Cello

Porcupine Dreams

Composed by Danny Green
September 17, 2014

A *Intro*

mf

B *Head*

5

mf

C

13

mp

17

mf *f*

D *Bass Solo*

21

p

E *Open - Piano Solo*

37

mf *f*

Tacit till cue

45

mp

49

mf

F *On Cue - Head*

53

mp

G

61

65

H

69 *Piano Sets up Fast Tempo*

I

77

J

85

89

K

Drum Solo
93

97 **3x**

Violin 1

Porcupine Dreams

Composed by Danny Green
September 17, 2014

A *Intro*

mf

B *Head*

5

mf

C

13

mp

17

mf *f*

D *Bass Solo*

21

p

E *Open - Piano Solo*

37

Tacit till cue

mp

41

mf *f*

45

mp

49

mf *f*

F On Cue - Head

53 *mf*

Musical staff for measure 53, starting with a treble clef and a dynamic marking of *mf*. The staff contains a series of notes and rests.

57 *f*

Musical staff for measure 57, starting with a treble clef and a dynamic marking of *f*. The staff contains a series of notes and rests.

G 61 *mp*

Musical staff for measure 61, starting with a treble clef and a dynamic marking of *mp*. The staff contains a series of notes and rests.

65 *mf* *f*

Musical staff for measure 65, starting with a treble clef and dynamic markings of *mf* and *f*. The staff contains a series of notes and rests.

H 69 *Piano Sets up Fast Tempo*

Musical staff for measure 69, starting with a treble clef and the instruction *Piano Sets up Fast Tempo*. The staff contains rests and time signature changes to 2/4 and 3/4.

I 77 *p* *f*

Musical staff for measure 77, starting with a treble clef and dynamic markings of *p* and *f*. The staff contains rests and notes.

J 85 *mp* *mp*

Musical staff for measure 85, starting with a treble clef and dynamic markings of *mp*. The staff contains a series of notes and rests.

89 *mp* *f*

Musical staff for measure 89, starting with a treble clef and dynamic markings of *mp* and *f*. The staff contains a series of notes and rests.

K *Drum Solo*

Musical staff for measure 93, starting with a treble clef and the instruction *Drum Solo*. The staff contains notes and rests with dynamic markings of *sfp*.

97 **3x** *sfp*

Musical staff for measure 97, starting with a treble clef and a dynamic marking of *sfp*. The staff contains notes and rests with dynamic markings of *sfp*.

Violin 2

Porcupine Dreams

Composed by Danny Green
September 17, 2014

A *Intro*

mf

B *Head*

5

mf

7

C

13

mp

17

mf *f*

D *Bass Solo*

21

p

7 8

E *Open - Piano Solo*

37

Tacit till cue

mp

41

mf *f*

45

mp

49

mf

F *On Cue - Head*

53 *mf*

Musical staff for measure 53, starting with a treble clef and a dynamic marking of *mf*. The staff contains a sequence of notes: a quarter rest, an eighth note G4, a quarter note A4, a quarter note B4, a quarter note C5, a quarter note B4, a quarter note A4, and a quarter note G4.

57 *f*

Musical staff for measure 57, starting with a treble clef and a dynamic marking of *f*. The staff contains a sequence of notes: a quarter rest, an eighth note G4, a quarter note A4, a quarter note B4, a quarter note C5, a quarter note B4, a quarter note A4, and a quarter note G4.

G 61 *mp*

Musical staff for measure 61, starting with a treble clef and a dynamic marking of *mp*. The staff contains a sequence of notes: a quarter note G4, a quarter note A4, a quarter note B4, a quarter note C5, a quarter note B4, a quarter note A4, and a quarter note G4.

65 *mf* *f*

Musical staff for measure 65, starting with a treble clef. The staff contains a sequence of notes: a quarter note G4, a quarter note A4, a quarter note B4, a quarter note C5, a quarter note B4, a quarter note A4, and a quarter note G4.

H 69 *Piano Sets up Fast Tempo*

Musical staff for measure 69, starting with a treble clef. The staff contains a sequence of notes: a quarter note G4, a quarter note A4, a quarter note B4, a quarter note C5, a quarter note B4, a quarter note A4, and a quarter note G4.

I 77 *p* *f*

Musical staff for measure 77, starting with a treble clef. The staff contains a sequence of notes: a quarter note G4, a quarter note A4, a quarter note B4, a quarter note C5, a quarter note B4, a quarter note A4, and a quarter note G4.

J 85 *mp* *mp*

Musical staff for measure 85, starting with a treble clef. The staff contains a sequence of notes: a quarter note G4, a quarter note A4, a quarter note B4, a quarter note C5, a quarter note B4, a quarter note A4, and a quarter note G4.

89 *mp* *f* 4:3 4:3

Musical staff for measure 89, starting with a treble clef. The staff contains a sequence of notes: a quarter note G4, a quarter note A4, a quarter note B4, a quarter note C5, a quarter note B4, a quarter note A4, and a quarter note G4.

K *Drum Solo* 93 *sfp*

Musical staff for measure 93, starting with a treble clef. The staff contains a sequence of notes: a quarter note G4, a quarter note A4, a quarter note B4, a quarter note C5, a quarter note B4, a quarter note A4, and a quarter note G4.

97 **3x** *sfp*

Musical staff for measure 97, starting with a treble clef. The staff contains a sequence of notes: a quarter note G4, a quarter note A4, a quarter note B4, a quarter note C5, a quarter note B4, a quarter note A4, and a quarter note G4.

Piano
(Strings Rendition)

Porcupine Dreams

Composed by Danny Green
September 17, 2014

A *Intro*
Dm Bbm Dm Bbm

B *Head*
5 Dm Bbm Dm Gø7
9 Fm/Ab Bbm B° Fm/C A7/C#

C
13 Dm Bbm Dm Gø7
17 F/C C#° Dm Bbm Fm/C B°/C C7(b9sus4) A7/C# 4:3 4:3

D *Bass Solo*
21 Dm Bbm Dm Gø7

25 Fm/Ab Bbm B° Fm/C A7/C#

29 Dm Bbm Dm Gø7

33 F/C C#° Dm Bbm Fm/C B°/C C7(b9sus4) A7/C#

E Open - Piano Solo

37 Dm Bbm Dm Gø7

41 Fm/Ab Bbm B° Fm/C A7/C#

45 Dm Bbm Dm Gø7

49 F/C C#° Dm Bbm Fm/C B°/C C7(b9sus4) A7/C#

F On Cue - Head

53 Dm Bbm Dm Gø7

57 Fm/Ab Bbm B° Fm/C A7/C#

G

61 Dm Bbm Dm Gø7

65 F/C C#° Dm Bbm Fm/C B°/C C7(b9sus4) A7/C#

4:3 4:3

H

Piano Sets up Fast Tempo

69

p *cresc.*

71

sfz

73

p *cresc.*

75

sfz

I

77 N.C. Bbm Dm Gø7

81 Fm/Ab Bbm B° Fm/C A7/C#

J

85 *Dm* *Bbm* *Dm* *Gø7*

89 *F/C* *C#°* *Dm* *Bbm* *Fm/C* *B°/C* *C7(b9sus4)* *A7/C#*

4:3 4:3

K

Drum Solo

93 *p* *cresc.*

95 *sfz*

97 **3x** *p* *cresc.*

99 *sfz*

Bass
(Strings Rendition)

Porcupine Dreams

Composed by Danny Green
September 17, 2014

A *Intro*
Dm Bbm Dm Bbm

B *Head*
5 Dm Bbm Dm Gø7

9 Fm/Ab Bbm B° Fm/C A7/C#

C 13 Dm Bbm Dm Gø7

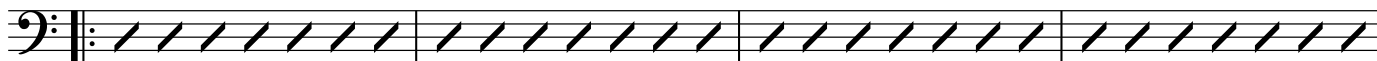
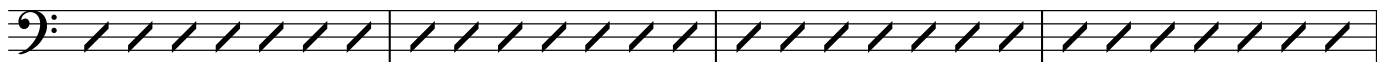
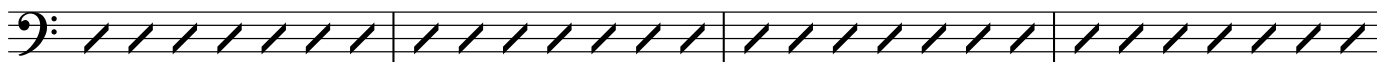
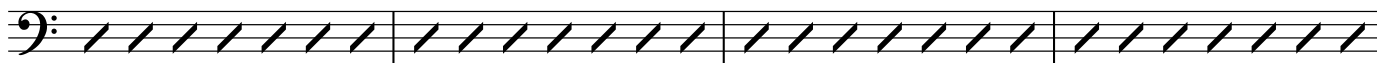
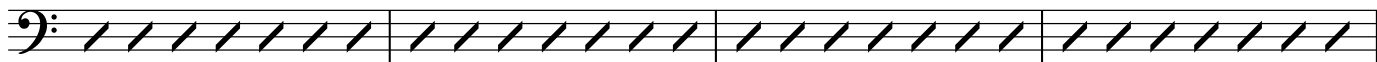
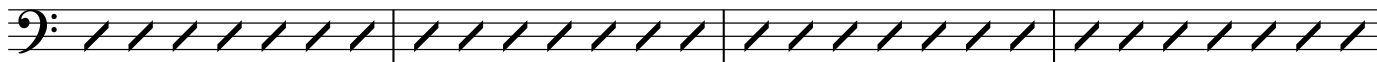
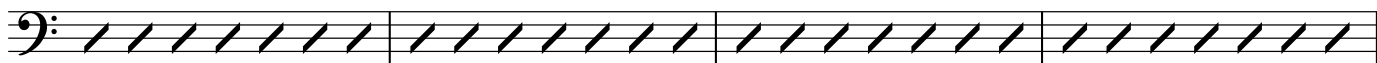
17 F/C C#° Dm Bbm Fm/C B°/C C7(b9sus4) A7/C#

D *Bass Solo*
21 Dm Bbm Dm Gø7

25 Fm/Ab Bbm B° Fm/C A7/C#

29 Dm Bbm Dm Gø7

33 F/C C#° Dm Bbm Fm/C B°/C C7(b9sus4) A7/C#

E Open - Piano Solo37 Dm Bbm Dm G^{ø7}41 Fm/Ab Bbm B^o Fm/C A⁷/C#45 Dm Bbm Dm G^{ø7}49 F/C C#^o Dm Bbm Fm/C B^o/C C7(b⁹sus4) A⁷/C#**F** On Cue - Head53 Dm Bbm Dm G^{ø7}57 Fm/Ab Bbm B^o Fm/C A⁷/C#**G**61 Dm Bbm Dm G^{ø7}65 F/C C#^o Dm Bbm Fm/C B^o/C C7(b⁹sus4) A⁷/C#

H *Piano Sets up Fast Tempo*

69

2

73 Dm

Bbm

Dm

Bbm

I

77

Bbm

Dm

Gø7

81 Fm/Ab

Bbm

B°

Fm/C

A7/C#

J

85 Dm

Bbm

Dm

Gø7

89 F/C

C#°

Dm

Bbm

Fm/C

B°/C

C7(b9sus4)

A7/C#

K *Drum Solo*

93 Dm

Bbm

Dm

Bbm

p

cresc.

3x

97 Dm

Bbm

Dm

Bbm

p

cresc.