

Soprano Saxophone

End of the Block

Composed by Danny Green
June 17, 2012

A *Intro*
CMaj7/G G7(sus4)^{b9} CMaj7/G G7(sus4)^{b9}

B 5

C 9

D 14

E 18

F 22

G 26

H 33 8

I 41

J 45

G Open - Solo Section

49 CMaj⁹ Eb¹³(sus⁴) AbMaj⁹ B¹³(sus⁴)

53 EMaj⁷(#5) G¹³(sus⁴) CMaj⁹ Eb¹³(sus⁴) G¹³(sus⁴)

57 CMaj⁹ Eb¹³(sus⁴) AbMaj⁹ B¹³(sus⁴)

61 EMaj⁷(#5) G¹³(sus⁴) CMaj⁹ B¹³(sus⁴) A¹³(sus⁴)

65 Ab¹³(sus⁴) C/Ab DbMaj⁷/Ab Ab¹³(sus⁴)^{b9} DbMaj⁷/Ab

69 Ab¹³(sus⁴) DbMaj⁷(#5) Dmi⁹ G¹³(sus⁴)

H On Cue

73 **7**

81

85

92

96

K

99

103

L

Piano or Sax Solo

107

EMaj7(#5) AMaj9(#11) F#mi9(11) CMaj9 B13(#9)

111

EADD2/G# G9(13) CMaj9 1. F#mi9(11) B13(-9) 2. F#mi9(11) B13(-9)

M

Drum Solo

116

120

124

128

132

137

EMaj9(#5)

Tenor Saxophone

End of the Block

Composed by Danny Green
June 17, 2012

A *Intro*
CMaj7/G G7(sus4)^{b9} CMaj7/G G7(sus4)^{b9}

B 5

9

C 14

18

D 22

26

E 33

8

F 41

45

G Open - Solo Section

49 CMaj⁹ Eb¹³(sus⁴) AbMaj⁹ B¹³(sus⁴)

53 EMaj⁷(#5) G¹³(sus⁴) CMaj⁹ Eb¹³(sus⁴) G¹³(sus⁴)

57 CMaj⁹ Eb¹³(sus⁴) AbMaj⁹ B¹³(sus⁴)

61 EMaj⁷(#5) G¹³(sus⁴) CMaj⁹ B¹³(sus⁴) A¹³(sus⁴)

65 Ab¹³(sus⁴) C/A^b DbMaj⁷/Ab Ab¹³(sus⁴)^{b9} DbMaj⁷/Ab

69 Ab¹³(sus⁴) DbMaj⁷(#5) Dmi⁹ G¹³(sus⁴)

H On Cue

73 **7**

81

85

92

96

K

99

Musical staff for measure 99, starting with a treble clef and a key signature of one sharp (F#). The staff contains a melodic line with a half note G4, a quarter note A4, a quarter note B4, a quarter note C5, a quarter note B4, a quarter note A4, and a quarter note G4.

103

Musical staff for measure 103, starting with a treble clef and a key signature of one sharp (F#). The staff contains a melodic line with a half note G4, a quarter note A4, a quarter note B4, a quarter note C5, a quarter note B4, a quarter note A4, and a quarter note G4. The staff ends with a double bar line.

L

Piano or Sax Solo

107 EMaj7(#5)

AMaj9(#11)

F#mi9(11)

CMaj9

B13(#9)

Musical staff for measure 107, starting with a treble clef and a key signature of one sharp (F#). The staff contains a series of diagonal slashes representing a piano or sax solo.

111 EADD2/G#

G9(13)

CMaj9

1. F#mi9(11) B13(-9)

2. F#mi9(11) B13(-9)

Musical staff for measure 111, starting with a treble clef and a key signature of one sharp (F#). The staff contains a series of diagonal slashes representing a piano or sax solo, followed by a melodic line with a quarter note G4, a quarter note A4, a quarter note B4, a quarter note C5, a quarter note B4, a quarter note A4, and a quarter note G4.

M

Drum Solo

116

Musical staff for measure 116, starting with a treble clef and a key signature of one sharp (F#). The staff contains a melodic line with a half note G4, a quarter note A4, a quarter note B4, a quarter note C5, a quarter note B4, a quarter note A4, and a quarter note G4.

120

Musical staff for measure 120, starting with a treble clef and a key signature of one sharp (F#). The staff contains a melodic line with a half note G4, a quarter note A4, a quarter note B4, a quarter note C5, a quarter note B4, a quarter note A4, and a quarter note G4.

124

Musical staff for measure 124, starting with a treble clef and a key signature of one sharp (F#). The staff contains a melodic line with a half note G4, a quarter note A4, a quarter note B4, a quarter note C5, a quarter note B4, a quarter note A4, and a quarter note G4.

128

Musical staff for measure 128, starting with a treble clef and a key signature of one sharp (F#). The staff contains a melodic line with a half note G4, a quarter note A4, a quarter note B4, a quarter note C5, a quarter note B4, a quarter note A4, and a quarter note G4.

132

Musical staff for measure 132, starting with a treble clef and a key signature of one sharp (F#). The staff contains a melodic line with a half note G4, a quarter note A4, a quarter note B4, a quarter note C5, a quarter note B4, a quarter note A4, and a quarter note G4.

137

EMaj9(#5)

Musical staff for measure 137, starting with a treble clef and a key signature of one sharp (F#). The staff contains a melodic line with a half note G4, a quarter note A4, a quarter note B4, a quarter note C5, a quarter note B4, a quarter note A4, and a quarter note G4. The staff ends with a double bar line.

Piano

End of the Block

Composed by Danny Green
June 17, 2012

A Intro

B♭Maj7/F F7(sus4)^{b9} B♭Maj7/F F7(sus4)^{b9}

B

5 B♭Maj⁹ D♭¹³(sus⁴) G♭Maj⁹ A¹³(sus⁴)

9 DMaj7(#5) F¹³(sus⁴) B♭Maj⁹ D♭¹³(sus⁴) G♭Maj⁹ A¹³(sus⁴) DMaj7(#5) GMaj9(#11)

C

14 B♭Maj⁹ D♭¹³(sus⁴) G♭Maj⁹ A¹³(sus⁴)

18 DMaj7(#5) F¹³(sus⁴) B♭Maj⁹ C#mi⁹(#11) F#7(-9) BMaj7(#5) A¹³(sus⁴) G¹³(sus⁴)

D

22 F#¹³(sus⁴) B♭/F# BMaj7/F# F#¹³(sus⁴)^{b9} BMaj7/F#

26 F#¹³(sus⁴) B♭¹³(-9) E♭Maj9(#5) A¹³(sus⁴) DMaj7(#5) F¹³(sus⁴)

E

33

Musical notation for section E, measures 33-36. Treble and bass staves with chords and melodic lines.

37

Musical notation for section E, measures 37-40. Treble and bass staves with chords and melodic lines.

F

41 B♭Maj⁹

D♭¹³(sus⁴)

G♭Maj⁹

A¹³(sus⁴)

Musical notation for section F, measures 41-44. Treble staff with chords and melodic lines.

45 DMaj⁷(#5)

F¹³(sus⁴)

B♭Maj⁹

C[#]mi⁹(11)

F[#]7(-9)

BMaj⁷(#5)

A¹³(#11)

Musical notation for section F, measures 45-48. Treble and bass staves with chords and melodic lines. Includes triplets and 4:3 ratios.

G

Open - Solo Section

49 B♭Maj⁹

D♭¹³(sus⁴)

G♭Maj⁹

A¹³(sus⁴)

Musical notation for section G, measures 49-52. Treble staff with rhythmic patterns.

53 DMaj⁷(#5)

F¹³(sus⁴)

B♭Maj⁹

D♭¹³(sus⁴)

F¹³(sus⁴)

Musical notation for section G, measures 53-56. Treble staff with rhythmic patterns.

57 B♭Maj⁹

D♭¹³(sus⁴)

G♭Maj⁹

A¹³(sus⁴)

Musical notation for section G, measures 57-60. Treble staff with rhythmic patterns.

61 DMaj⁷(#5)

F¹³(sus⁴)

B♭Maj⁹

A¹³(sus⁴)

G¹³(sus⁴)

Musical notation for section G, measures 61-64. Treble staff with rhythmic patterns.

65 F#13(sus4) Bb/F# BMaj7/F# F#13(sus4)b9 BMaj7/F#

69 F#13(sus4) BMaj7(#5) Cmi9 F13(sus4)

H On Cue

73

77

I

81 F#13(sus4) Bb/F# BMaj7/F# F#13(sus4)b9 BMaj7/F#

85 F#13(sus4) Bb13(-9) EbMaj9(#5) A13(sus4) DMaj7(#5) F13(sus4)

J

92 BbMaj9 Db13(sus4) GbMaj9 A13(sus4)

96 DMaj7(#5) F13(sus4) BbMaj9 Db13(sus4) GbMaj9 A13(sus4)

K

99 DMaj7(#5) GMaj9(#11) Emi9(11) BbMaj9 A13(#9)

103 DADD2/F# F9(13) BbMaj9 Emi9(11) A13(-9)

L

Piano or Sax Solo

107 DMaj7(#5) GMaj9(#11) Emi9(11) BbMaj9 A13(#9)

111 DADD2/F# F9(13) BbMaj9 1. Emi9(11) A13(-9) 2. Emi9(11) A13(-9)

M

Drum Solo

116 DMaj9 GMaj9(#11) Emi9(11) BbMaj9 A13(#9)

120 DADD2/F# F9(13) E7(#9) A13(#9)

124 DMaj9 GMaj9(#11) Emi9(11) BbMaj9 A13(#9)

128 DADD2/F# F9(13) E7(#9) EbMaj7(#11) EMaj7(#11) FMaj7(#11) GbMaj7(#11)

132 DMaj9 GMaj9(#11) Emi9(11) BbMaj9 A13(#9)

136 DADD2/F# F9(13) E7(#9) EbMaj7(#11) EMaj7(#11) FMaj7(#11) GbMaj7(#11) DMaj9(#5)

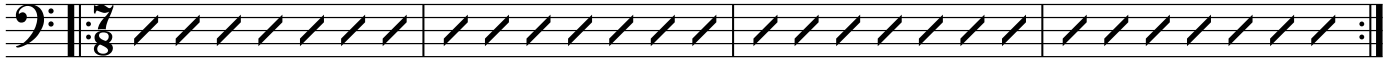
Bass

End of the Block

Composed by Danny Green
June 17, 2012

A *Intro*

B♭Maj7/F F7(sus4)^{b9} B♭Maj7/F F7(sus4)^{b9}

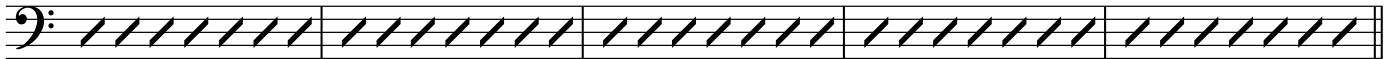


B

5 B♭Maj9 D♭13(sus4) G♭Maj9 A13(sus4)



9 DMaj7(♯5) F13(sus4) B♭Maj9 D♭13(sus4) G♭Maj9 A13(sus4) DMaj7(♯5) GMaj9(♯11)



C

14 B♭Maj9 D♭13(sus4) G♭Maj9 A13(sus4)



18 DMaj7(♯5) F13(sus4) B♭Maj9 C♯mi9(11) F♯7(-9) BMaj7(♯5) A13(sus4) G13(sus4)

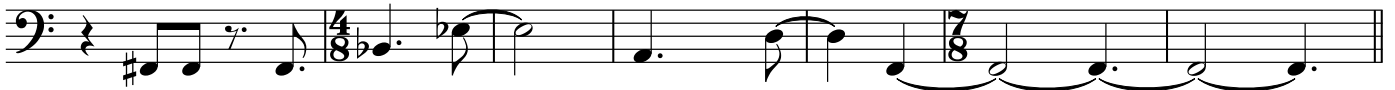


D

22 F♯13(sus4) B♭/F♯ BMaj7/F♯ F♯13(sus4)^{b9} BMaj7/F♯



26 F♯13(sus4) B♭13(-9) E♭Maj9(♯5) A13(sus4) DMaj7(♯5) F13(sus4)

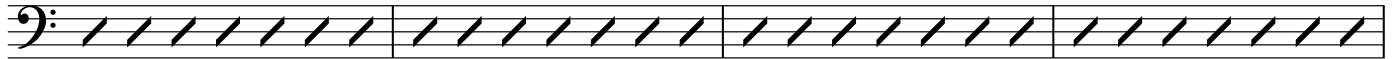
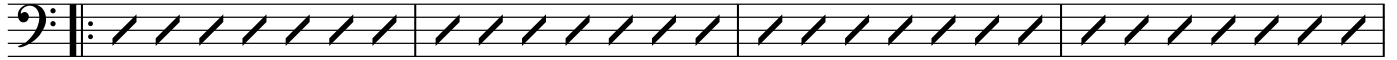
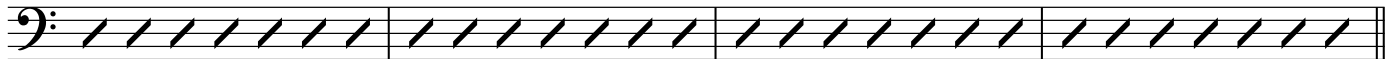
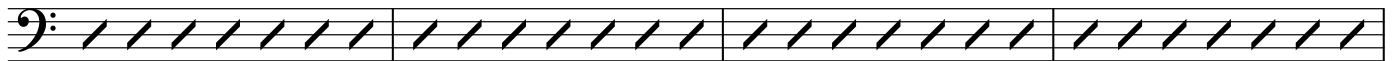


E 33



37



F41 B♭Maj⁹ D♭¹³(sus⁴) G♭Maj⁹ A¹³(sus⁴)45 DMaj⁷(#5) F¹³(sus⁴) B♭Maj⁹ C#mi⁹(11) F#7(-9) BMaj⁷(#5) A¹³(#11)**G** Open - Solo Section49 B♭Maj⁹ D♭¹³(sus⁴) G♭Maj⁹ A¹³(sus⁴)53 DMaj⁷(#5) F¹³(sus⁴) B♭Maj⁹ D♭¹³(sus⁴) F¹³(sus⁴)57 B♭Maj⁹ D♭¹³(sus⁴) G♭Maj⁹ A¹³(sus⁴)61 DMaj⁷(#5) F¹³(sus⁴) B♭Maj⁹ A¹³(sus⁴) G¹³(sus⁴)65 F#¹³(sus⁴) B♭/F# BMaj⁷/F# F#¹³(sus⁴)^{b9} BMaj⁷/F#69 F#¹³(sus⁴) BMaj⁷(#5) Cmi⁹ F¹³(sus⁴)**H** On Cue

73



77

**I**81 F#¹³(sus⁴) B♭/F# BMaj⁷/F# F#¹³(sus⁴)^{b9} BMaj⁷/F#85 F#¹³(sus⁴) B♭¹³(-9) E♭Maj⁹(#5) A¹³(sus⁴) DMaj⁷(#5) F¹³(sus⁴)

J 92 B♭Maj⁹ D♭¹³(sus⁴) G♭Maj⁹ A¹³(sus⁴)

96 DMaj⁷(#5) F¹³(sus⁴) B♭Maj⁹ D♭¹³(sus⁴) G♭Maj⁹ A¹³(sus⁴)

K 99 DMaj⁷(#5) GMaj⁹(#11) Emi⁹(11) B♭Maj⁹ A¹³(#9)

103 DADD2/F# F⁹(13) B♭Maj⁹ Emi⁹(11) A¹³(-9)

L Piano or Sax Solo
107 DMaj⁷(#5) GMaj⁹(#11) Emi⁹(11) B♭Maj⁹ A¹³(#9)

111 DADD2/F# F⁹(13) B♭Maj⁹ 1. Emi⁹(11) A¹³(-9) 2. Emi⁹(11) A¹³(-9)

M Drum Solo
116 DMaj⁷(#5) GMaj⁹(#11) Emi⁹(11) B♭Maj⁹ A¹³(#9)

120 DADD2/F# F⁹(13) E7#9

124 DMaj⁷(#5) GMaj⁹(#11) Emi⁹(11) B♭Maj⁹ A¹³(#9)

128 DADD2/F# F⁹(13) E7(#9)

132 DMaj⁷(#5) GMaj⁹(#11) Emi⁹(11) B♭Maj⁹ A¹³(#9)

136 DADD2/F# F⁹(13) E7#9 DMaj⁹(#5)